

Energy efficiency is an important consideration when buying any heating system. But there are other factors you must consider too. Like manufacturer experience, reputation and service. The simple fact is, any heating system is only as good as the company behind it.

So consider this: For over 80 years, **e-f-m** has been designing and manufacturing boilers and furnaces to supply dependable comfort for America's homeowners. When you do something for that long, you naturally master the process.

Because of our strict quality control standards, only the finest materials and craftsmanship is used to manufacture our products. And so it is that our boilers have become the "stuff of legend," with many of our units seeing continuous service for 40 years or longer.

Operation

On call for heat the circulator comes on immediately, and the elements are energized in steps — two elements per step spaced at approximately 60 second intervals. When the thermostat is satisfied, all elements and circulator are de-energized at once. A high limit condition will instantly de-energize all elements and the circulator will continue to run.

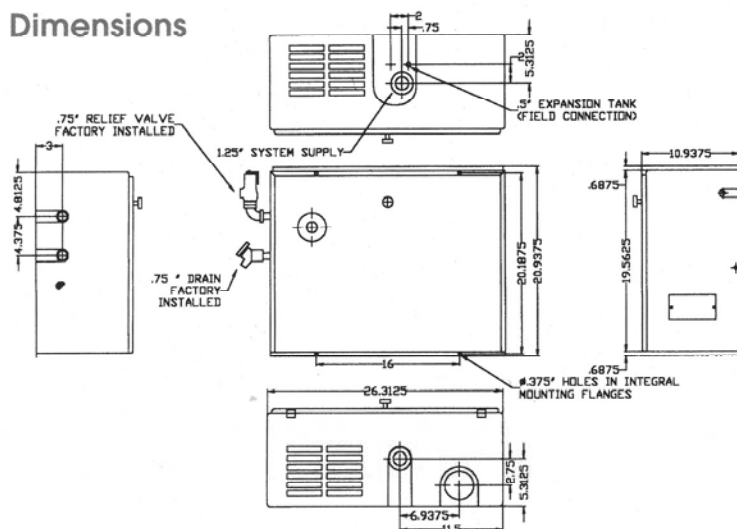
Ratings

Boiler Size	KW Rating	Input	BTU/Hour		No. of 5KW Heater Elements	Amps			Watts at 240V	Approx. Shipping Wgt. Lbs.	
			Gross Output	*Net Output		Total	Circuit				
							1	2			3
EB4-10	10	34,000	34,000	30,000	2	43	43	—	—	10,000	115
EB4-15	15	51,000	51,000	44,000	3	64	43	21	—	15,000	120
EB4-20	20	68,000	68,000	59,000	4	85	43	42	—	20,000	120
EB4-25	25	85,000	85,000	74,000	5	106	43	42	21	25,000	136
EB4-30	30	102,000	102,000	89,000	6	127	43	42	42	30,000	145

ELECTRICAL CHARACTERISTICS -- 120/240 VOLTS A.C. 3 WIRE SINGLE PHASE 60 HZ

* Net ratings are based on installed radiation of sufficient quantity to serve the requirements of the building and nothing need be added for normal piping and pick up. Net rating is based on a piping and pick up allowance of 13%.

Dimensions



Equipment

Steel boiler, jacket, insulation, controls and circulator.

Factory Installed – ASME relief valve, temperature and pressure gauge, elements, circulator, drain cock, completely wired.

Included but not installed – Air vent, thermostat.
10 Year Limited Warranty on boiler shell, 1 year limited warranty on all other components.

Authorized **e-f-m** Sales and Service:

e-f-m

302 South Fourth Street • Emmaus, PA 18049

Voice: 610/965-9041 • 800/935-0933 • Fax: 610/967-6593